



© Sabine König



Identification guide of the butterflies of the Lake Neusiedl Region

The **European Butterfly Monitoring Scheme** (eBMS) aims to collect monitoring data on butterflies across Europe to promote their conservation. With the help of volunteers, butterflies are observed and counted according to defined methods.

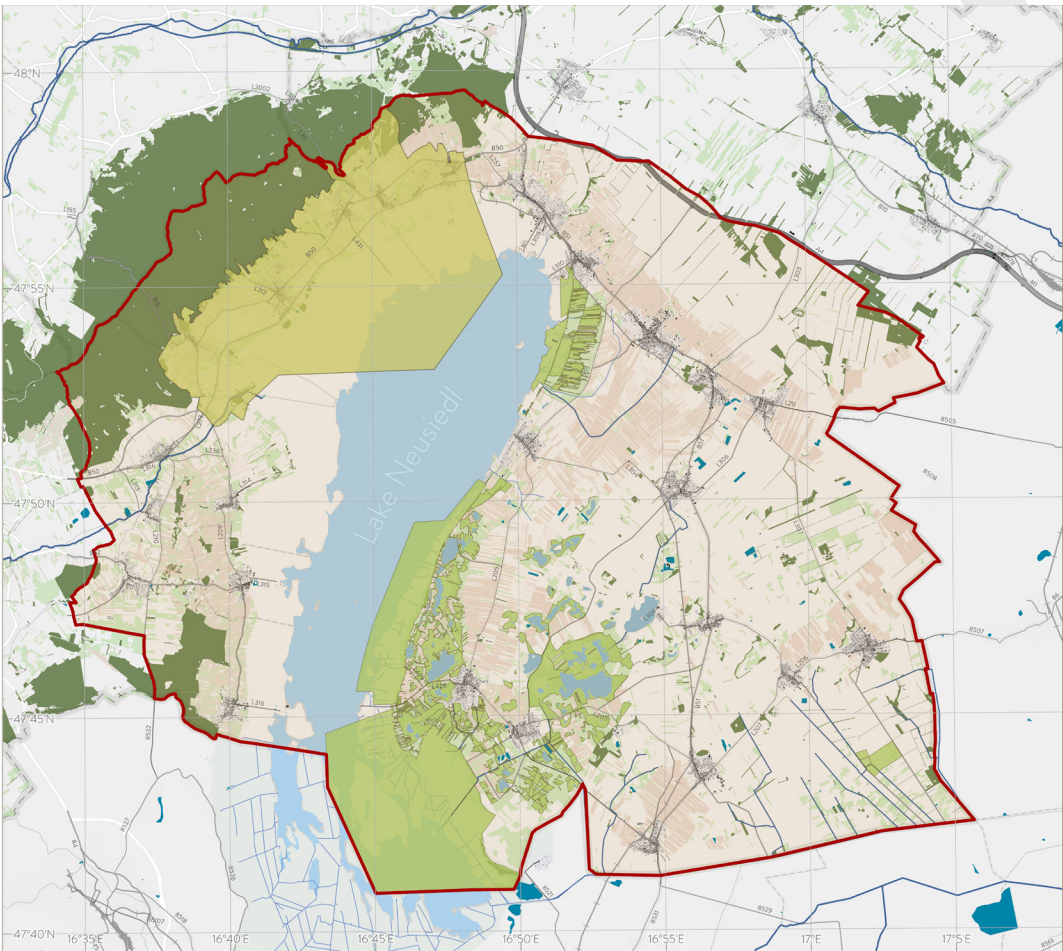
The present guide explains the monitoring according to the methods of the eBMS and facilitates the identification of butterflies of the Lake Neusiedl region.

The Neusiedler See - Seewinkel National Park, the World Heritage Nature Park Neusiedler See - Leithagebirge and the Biological Station Neusiedler See have jointly set themselves the goal of establishing and coordinating the butterfly monitoring in the area around Lake Neusiedl.

***Your contribution to the monitoring
helps protect butterflies!***

The Lake Neusiedl Region

The area around Lake Neusiedl - from the Rust hills and the Leitha mountain range to the lowland plain Seewinkel with the unique salt lakes and the wide Puszta landscape east of the shallow steppe lake is a unique part of Austria. With its location on the eastern edge of the Alps and on the western edge of the Hungarian Plain, it is a border area not only from a historical, but especially from a biological point of view, where plant and animal species from Alpine, Pannonian, Asian, Mediterranean and Nordic areas can be found. Large wetlands, dry grasslands, sandy steppes, saline sites and forests lie side by side here like a mosaic. Without this diversity of valuable habitats, such enormous species richness would not be possible.



Of the approx. 215 butterfly species recorded throughout Austria, approx. 115 species currently occur in the Neusiedler See region. The area covered by the species list is bounded by the Rust Hills and the Leitha mountain range in the west, by the A4 freeway in the north and by the Austrian-Hungarian state border in the east and south (see map).

The present species list is based on extensive surveys by Helmut Höttinger over the last four decades. This also concerns the information on distribution (local, scattered, widespread), flight times (phenology) and possibilities of confusion. A summary publication on the distribution and abundance of butterflies around Lake Neusiedl does not exist at present.

Why monitoring butterflies?

If we want to slow down or even prevent a further decline of butterflies in the future, we need to gain an overview of their population development. In addition, we want to know whether the efforts against the decline in insect populations are effective. Butterflies are an insect group for which repeated and standardized monitoring programs make easy to draw conclusions about long-term changes in the biotic communities possible.

One goal of the Austrian Butterfly Conservation (ABC) is to establish butterfly monitoring in Austria. For further information:

www.austrian-butterfly-conservation.jimdosite.com

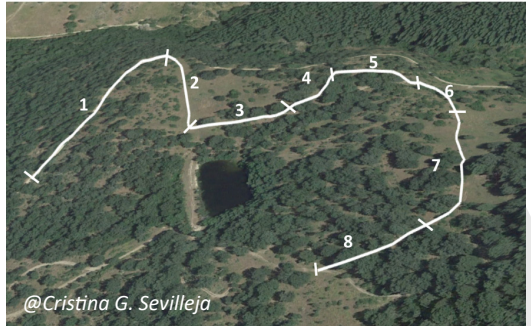


Research methods

Transects and general conditions

Walking a transect is the most commonly used method of **European Butterfly Monitoring** (eBMS). The data are used to calculate trends on butterfly abundance for each European country and across Europe.

A previously defined route (maximum 1000 m, divided into sections of 50-200 m, within a section only a largely homogeneous habitat) is walked several times between April and September (preferably 10 times). All butterfly species are recorded and the individuals counted.



Register via www.butterfly-monitoring.net, create your transect, count the butterflies and enter your results into the database either via www.butterfly-monitoring.net or directly via the eBMS App ButterflyCount.

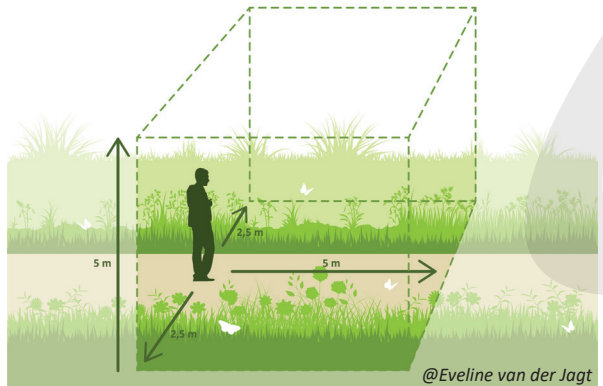
The app can be set up on [Android](#) or [Apple](#) systems and allows butterfly counts anywhere in Europe.



**Butterfly
Count
App**

The following rules should be followed:

- Count all the butterflies of each species you encounter in an imaginary cube: 2.5m to the left and right, and 5m in front of and above you.
- The selected route should be walked slowly and at a steady pace.
- Observations should be made between 10am and 5pm in sunny and preferably windless weather conditions. The temperature should be above 13°C when sunny and above 17°C when cloudy.



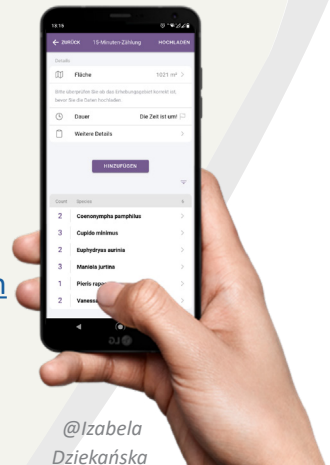
- If you do not use the eBMS app, the results should be entered on the website or passed on to the Austrian coordination person.

15-Minutes counts

You can also count butterflies outside of the transect monitoring, for example when you are out for a walk. The other method used by eBMS is based on counting all butterfly individuals within 15 minutes. 15-minute Counts can be conducted on a path, in a defined area (e.g. a garden, a meadow), or around a fixed point. The same time and weather conditions should be followed as for transect surveys.

The eBMS App, ButterflyCount, has also been set up to record the 15-minute Counts. The app records the route and the position.

More information on monitoring:
www.butterfly-monitoring.net/de/ebms-app
www.austrian-butterfly-conservation.jimdosite.com



@Izabela
Dziekańska

Use of the identification charts

This folder is intended to facilitate the identification of the butterflies of the Lake Neusiedl area. The species are grouped by families (see information in the margin). Some species which are difficult to distinguish are listed as species groups (names separated by slashes). Not included are species that are certainly or presumably extinct in the area and some only rarely recorded migratory butterflies (e.g. the cardinal *Argynnis pandora*).

In addition to the scientific and German species name, information on flight time, size and frequency categories are shown symbolically. With few exceptions, the scientific names follow the book "Insekten in Wien - Tagfalter" (Höttinger et al. 2013, ed.: Österreichische Gesellschaft für Entomofaunistik), those of the German names follow the red list of the butterflies of Austria. The size of the illustrations does not correspond to the actual size of the animals (note the butterfly symbols for approximate wing span: blue < 3 cm, yellow = 3-5 cm, purple > 5 cm). Distribution in the area is indicated by three categories (local, scattered, widespread).



Swallowtail
Papilio machaon



J F M A M J J A S O N D



Scarce Swallowtail
Iphiclus podalirius



J F M A M J J A S O N D



Southern Festoon
Zerynthia polyxena



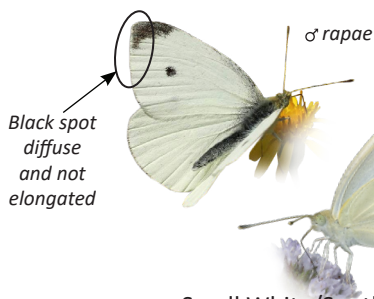
J F M A M J J A S O N D



Clouded Apollo
Parnassius mnemosyne



J F M A M J J A S O N D

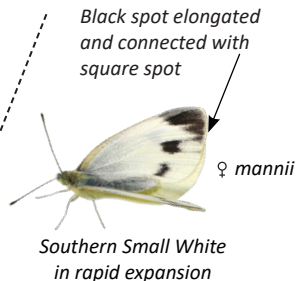


♂ *rapae*

Black spot
diffuse
and not
elongated



♀ *rapae*



♀ *mannii*

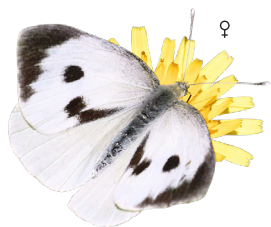
Black spot elongated
and connected with
square spot

Southern Small White
in rapid expansion

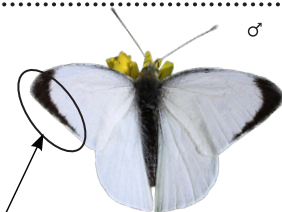
Small White/Southern Small White* - *Pieris rapae/mannii*



J F M A M J J A S O N D



♀



♂

Black spot reaches far
down the wing margin



Large White* - *Pieris brassicae*



J F M A M J J A S O N D

Orange individuals mostly *crocea*, more rarely *erate*



Clouded Yellow*
Colias crocea

J	F	M	A	M	J	J	A	S	O	N	D
---	---	---	---	---	---	---	---	---	---	---	---



Pale/Berger's/Eastern Pale Clouded Yellow*
Colias hyale/alfacariensis/erate

J	F	M	A	M	J	J	A	S	O	N	D
---	---	---	---	---	---	---	---	---	---	---	---

Non-orange individuals difficult to identify



Brimstone

Gonepteryx rhamni



J	F	M	A	M	J	J	A	S	O	N	D
---	---	---	---	---	---	---	---	---	---	---	---



Black-veined White

Aporia crataegi



J	F	M	A	M	J	J	A	S	O	N	D
---	---	---	---	---	---	---	---	---	---	---	---



Green pattern spotted with white stains

Orange-Tip

Anthocharis cardamines



J	F	M	A	M	J	J	A	S	O	N	D
---	---	---	---	---	---	---	---	---	---	---	---

white spots



Mickey Mouse pattern

Eastern Bath White

Pontia edusa



J	F	M	A	M	J	J	A	S	O	N	D
---	---	---	---	---	---	---	---	---	---	---	---



Green-veined White*

Pieris napi



J	F	M	A	M	J	J	A	S	O	N	D
---	---	---	---	---	---	---	---	---	---	---	---



Wood/Cryptic Wood White*

Leptidea sinapis/juvernica



J	F	M	A	M	J	J	A	S	O	N	D
---	---	---	---	---	---	---	---	---	---	---	---



Large Tortoiseshell*

Nymphalis polychloros (Z)

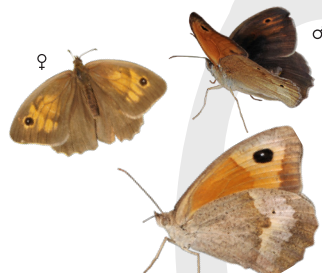
J F M A M J J A S O N D



Small Tortoiseshell

Aglais urticae (V)

J F M A M J J A S O N D



Meadow Brown*

Maniola jurtina (V)

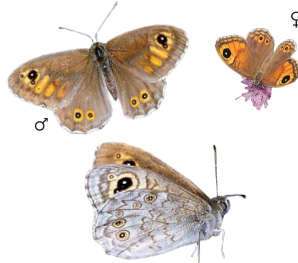
J F M A M J J A S O N D



Wall Brown

Lasiommata megera (V)

J F M A M J J A S O N D



Large Wall Brown

Lasiommata maera (Z)

J F M A M J J A S O N D



Speckled Wood

Pararge aegeria (V)

J F M A M J J A S O N D



Silver-Washed Fritillary*

Argynnis paphia (V)

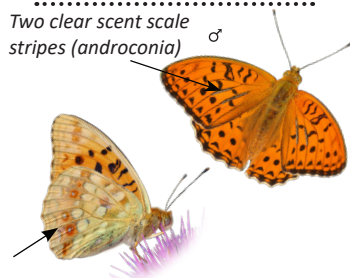
J F M A M J J A S O N D



Dark Green Fritillary*

Speyeria aglaja (Z)

J F M A M J J A S O N D



High Brown Fritillary*

Fabriciana adippe (Z)

J F M A M J J A S O N D



Scarce Fritillary

Euphydryas maturna (L)

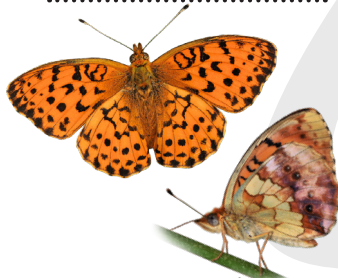
J F M A M J J A S O N D



Queen of Spain Fritillary

Issoria lathonia (V)

J F M A M J J A S O N D



Marbled Fritillary*

Brenthis daphne (V)

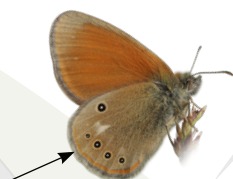
J F M A M J J A S O N D



Small Heath*
Coenonympha pamphilus (V) (butterfly icon)

J F M A M J J A S O N D

Very difficult species group; reliable determination only by genitalia!



Chestnut Heath
Coenonympha glycerion (V) (butterfly icon)

J F M A M J J A S O N D



Pearly Heath
Coenonympha arcania (V) (butterfly icon)

J F M A M J J A S O N D



Heath/Nickerl's/Assmann's Fritillary*
Melitaea athalia/aurelia/britomartis

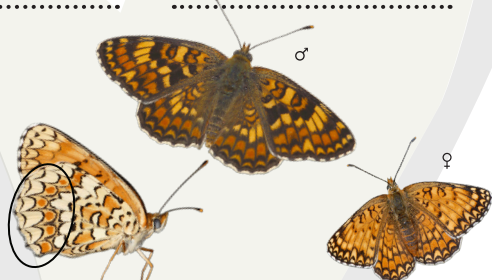
J F M A M J J A S O N D (V) (L) (butterfly icon)

black dots in orange band



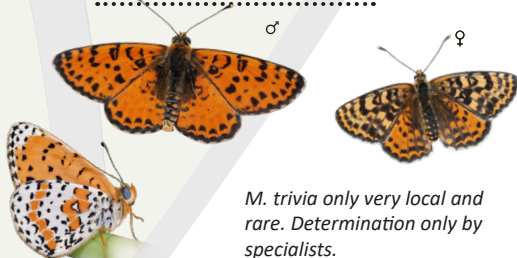
Glanville Fritillary*
Melitaea cinxia (L) (butterfly icon)

J F M A M J J A S O N D



Knapweed Fritillary*
Melitaea phoebe (Z) (butterfly icon)

J F M A M J J A S O N D



Spotted/Lesser Spotted Fritillary*
Melitaea didyma/trivia (Z) (L) (butterfly icon)

J F M A M J J A S O N D

M. trivia only very local and rare. Determination only by specialists.



Small Pearl Bordered Fritillary*
Boloria selene (L) (butterfly icon)

J F M A M J J A S O N D



Pearl Bordered Fritillary*
Boloria euphrosyne (Z) (butterfly icon)

J F M A M J J A S O N D



Violet Fritillary*
Boloria dia (V) (butterfly icon)

J F M A M J J A S O N D



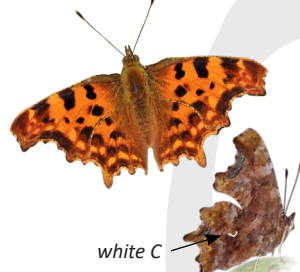
Map
Araschnia levana (V) (orange)

J F M A M J J A S O N D



Camberwell Beauty
Nymphalis antiopa (Z) (purple)

J F M A M J J A S O N D



Comma
Polygonia c-album (V) (orange)

J F M A M J J A S O N D



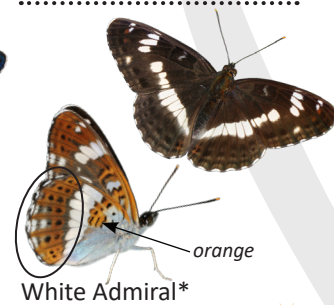
Purple Emperor*
Apatura iris (L) (purple)

J F M A M J J A S O N D



Poplar Admiral*
Limenitis populi (L) (purple)

J F M A M J J A S O N D



White Admiral*
Limenitis camilla (L) (orange)

J F M A M J J A S O N D



Lesser Purple Emperor*
Apatura ilia (Z) (purple)

J F M A M J J A S O N D



Hungarian Glider*
Neptis rivularis (Z) (orange)

J F M A M J J A S O N D



Common Glider*
Neptis sappho (Z) (orange)

J F M A M J J A S O N D



Peacock
Aglais io (V) (purple)

J F M A M J J A S O N D



Red Admiral
Vanessa atalanta (V) (purple)

J F M A M J J A S O N D



Painted Lady
Vanessa cardui (V) (purple)

J F M A M J J A S O N D



False Grayling*
Arethusana arethusa (L) 🦋

J F M A M J J A S O N D



Grayling*
Hipparchia semele (Z) 🦋

J F M A M J J A S O N D



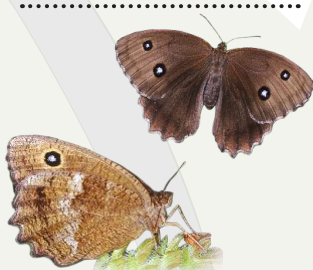
Woodland Grayling*
Hipparchia fagi (L) 🦋

J F M A M J J A S O N D



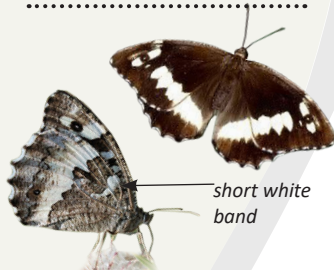
Marbled White
Melanargia galathea (V) 🦋

J F M A M J J A S O N D



Dryad
Minois dryas (Z) 🦋

J F M A M J J A S O N D



Great Banded Grayling
Brintesia circe (V) 🦋

J F M A M J J A S O N D



Nettle-tree Butterfly
Libythea celtis (L) 🦋

J F M A M J J A S O N D



Ringlet
Aphantopus hyperantus (V) 🦋

J F M A M J J A S O N D



Woodland Brown
Lopinga achine (L) 🦋

J F M A M J J A S O N D



Woodland ringlet
Erebia medusa (L) 🦋

J F M A M J J A S O N D



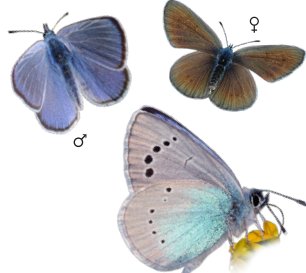
Scotch Argus
Erebia aethiops (L) 🦋

J F M A M J J A S O N D



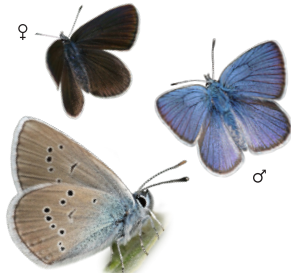
Duke of Burgundy*
Hamearis lucina (L) 🦋

J F M A M J J A S O N D



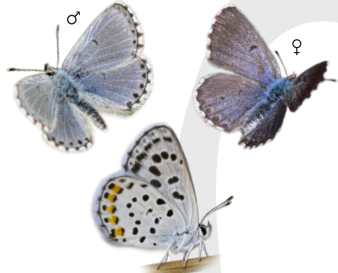
Green-underside Blue
Glaucopteryx alexis (Z) ♀

J F M A M J J A S O N D



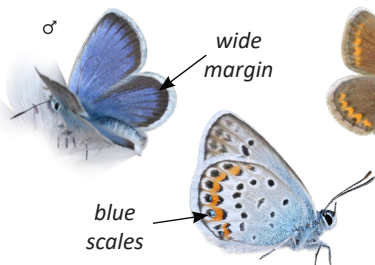
Mazarine Blue*
Cyaniris semiargus (L) ♀

J F M A M J J A S O N D



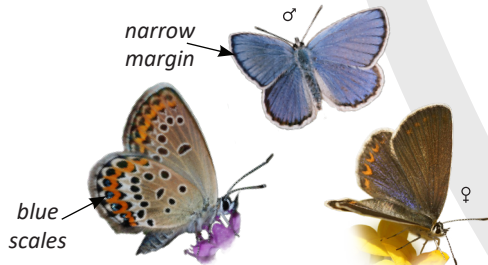
Eastern Baton Blue*
Pseudophilotes vicrama (L) ♀

J F M A M J J A S O N D



Silver-studded Blue*
Plebejus argus (V) ♀

J F M A M J J A S O N D



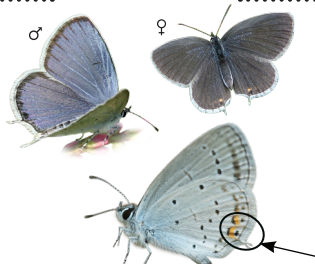
Idas/Reverdin's Blue*
Plebejus idas/argyrognomon (V) ♀

J F M A M J J A S O N D



Small Blue*
Cupido minimus (Z) ♀

J F M A M J J A S O N D



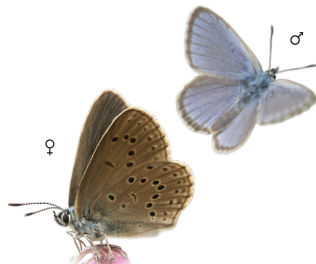
Short-tailed Blue*
Cupido argiades (V) ♀

J F M A M J J A S O N D



Eastern Short-tailed Blue*
Cupido decoloratus (L) ♀

J F M A M J J A S O N D



Alcon Blue*
Phengaris alcon (L) ♀

J F M A M J J A S O N D



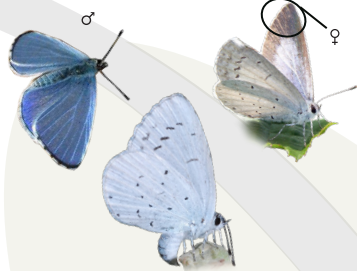
Scarce Large Blue*
Phengaris teleius (L) ♀

J F M A M J J A S O N D



Dusky Large Blue*
Phengaris nausithous (L) ♀

J F M A M J J A S O N D



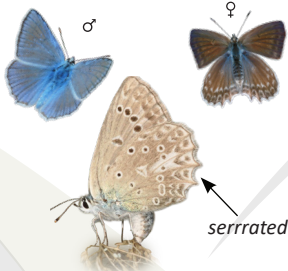
Holly Blue*
Celastrina argiolus (V) ♀

J F M A M J J A S O N D



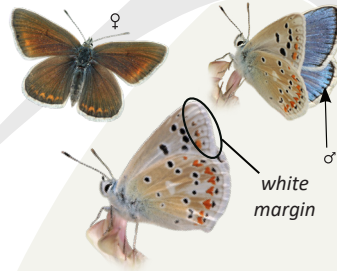
clear spot

Possibly incl. *A. artaxerxes*
(not registered so far)



Meleager's Blue*
Polyommatus daphnis (L) ♀

J F M A M J J A S O N D



Turquoise Blue*
Polyommatus dorylas (L) ♀

J F M A M J J A S O N D



basal spot missing

2 spots together

Brown Argus*
Aricia agestis (V) ♀

J F M A M J J A S O N D



basal spot

Individuals without basal spot often indistinguishable from *P. thersites*.

Common Blue*
Polyommatus icarus (V) ♀

J F M A M J J A S O N D

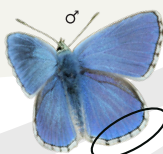
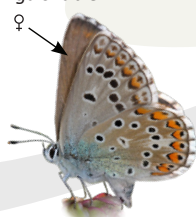
brown, hardly distinguishable



Chalk Hill Blue*
Lysandra coridon (Z) ♀

J F M A M J J A S O N D

hardly distinguishable



black fringes

Adonis Blue*
Lysandra bellargus (Z) ♀

J F M A M J J A S O N D

basal spot missing



Hardly distinguishable from *P. icarus* individuals without basal spot.

Chapman's Blue*
Polyommatus thersites (Z) ♀

J F M A M J J A S O N D

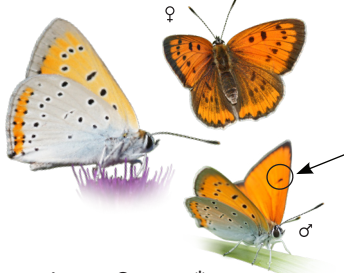


Amanda's Blue*
Polyommatus amandus (L) ♀

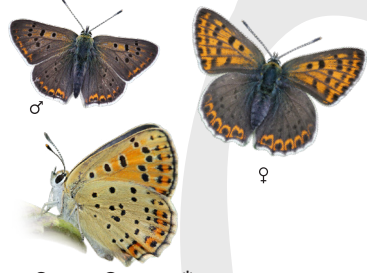
J F M A M J J A S O N D



Small Copper
Lycaena phlaeas



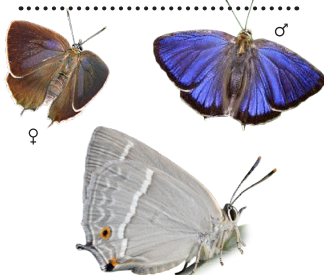
Large Copper*
Lycaena dispar



Sooty Copper*
Lycaena tityrus



Brown Hairstreak
Thecla betulae



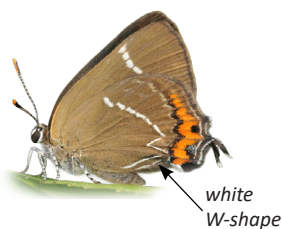
Purple Hairstreak
Favonius quercus



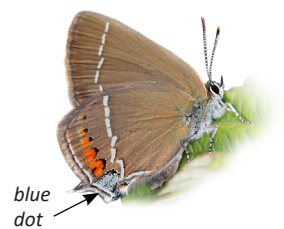
Green Hairstreak
Callophrys rubi



Black Hairstreak*
Satyrium pruni



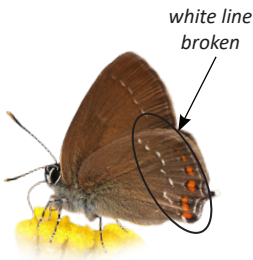
White-letter Hairstreak*
Satyrium w-album



Blue Spot Hairstreak*
Satyrium spini



Sloe Hairstreak*
Satyrium acaciae



Ilex Hairstreak*
Satyrium ilicis

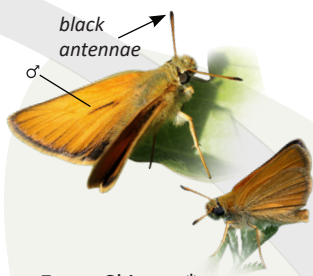


HESPERIIDAE



Mallow Skipper*
Carchardus alceae

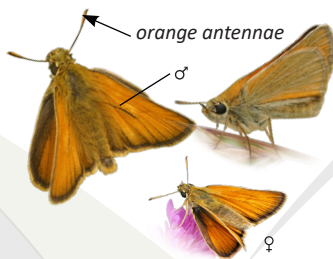




Essex Skipper*

Thymelicus lineola


J	F	M	A	M	J	J	A	S	O	N	D
---	---	---	---	---	---	---	---	---	---	---	---



Small Skipper*

Thymelicus sylvestris


J	F	M	A	M	J	J	A	S	O	N	D
---	---	---	---	---	---	---	---	---	---	---	---



Lulworth Skipper*

Thymelicus acteon

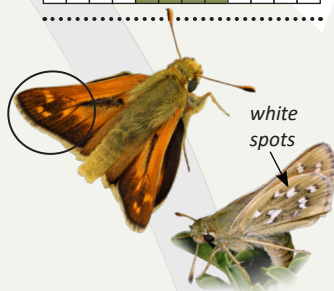

J	F	M	A	M	J	J	A	S	O	N	D
---	---	---	---	---	---	---	---	---	---	---	---



Dingy Skipper

Erynnis tages


J	F	M	A	M	J	J	A	S	O	N	D
---	---	---	---	---	---	---	---	---	---	---	---



Silver Spotted Skipper*

Hesperia comma

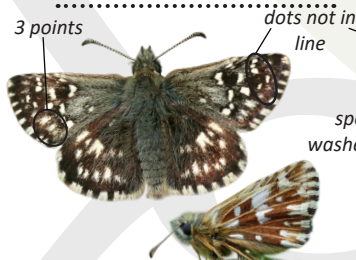

J	F	M	A	M	J	J	A	S	O	N	D
---	---	---	---	---	---	---	---	---	---	---	---



Large Skipper*

Ochlodes sylvanus


J	F	M	A	M	J	J	A	S	O	N	D
---	---	---	---	---	---	---	---	---	---	---	---



Grizzled Skipper*

Pyrgus malvae


J	F	M	A	M	J	J	A	S	O	N	D
---	---	---	---	---	---	---	---	---	---	---	---



Oberthür's Grizzled Skipper*

Pyrgus armonicanus


J	F	M	A	M	J	J	A	S	O	N	D
---	---	---	---	---	---	---	---	---	---	---	---



Safflower Skipper*

Pyrgus carthami


J	F	M	A	M	J	J	A	S	O	N	D
---	---	---	---	---	---	---	---	---	---	---	---



Chequered Skipper

Carterocephalus palaemon

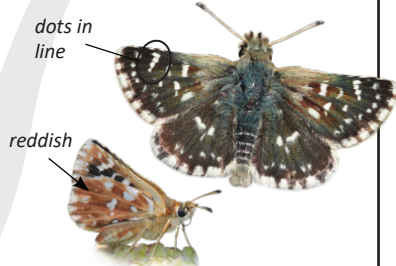

J	F	M	A	M	J	J	A	S	O	N	D
---	---	---	---	---	---	---	---	---	---	---	---



Large Chequered Skipper

Heteropterus morpheus


J	F	M	A	M	J	J	A	S	O	N	D
---	---	---	---	---	---	---	---	---	---	---	---



Red Underwing Skipper*

Spialia sertorius


J	F	M	A	M	J	J	A	S	O	N	D
---	---	---	---	---	---	---	---	---	---	---	---

Butterfly Conservation Europe (BCE) and the UK Centre for Ecology and Hydrology (UKCEH) created the **European Butterfly Monitoring Scheme (eBMS)** to collect data from the various butterfly monitoring projects in Europe. Member countries share observations with the eBMS database to document and analyze population trends of European butterflies.

Visit the eBMS website, www.butterfly-monitoring.net/austrian-bms, for more information on butterfly monitoring. If you would like to help with butterfly monitoring or support the work of the Austrian Butterfly Conservation (ABC), please contact: AustrianButterflyConservation@gmail.com and [Tagfalter-Monitoring Österreich Facebook Gruppe](#).

Contact: Neusiedler See - Seewinkel National Park: forschung@npneusiedlersee.at ; Naturpark Neusiedler See-Leithagebirge: info@neusiedlersee-leithagebirge.at ; Biological Station Neusiedler See: post.bs-illmitz@bgld.gv.at

This identification guide was prepared with the participation of BCE and eBMS and funded by DG Environment (European Commission) under the SPRING service contract. It can be downloaded from the eBMS website.

Authors: Helmut Höttinger, Arno Cimadom, Benjamin Knes & Cristina G. Sevilleja.

Publisher/editor: Nationalpark Neusiedler See - Seewinkel, A-7142 Illmitz.

Pictures species: Andreas Pospisil; Paolo Mazzei, Marco Bonifacino, Raniero Panfili and Daniel Morel (www.leps.it); Izabela Dziekańska, Marcin Sielezniew, Martin Wiemers, Albert Vliegthart and Chris van Swaay.

Edition: Eveline van der Jagt and Cristina G. Sevilleja

Database: Scientific surveys by Helmut Höttinger.

Acknowledgements: We thank Thomas Zechmeister and Konrad Fiedler for important comments on the species list of the area.

Print: Druckerei Janetschek GmbH, A-3860 Heidenreichstein.

Flight period: months in which species can be observed.

J F M A M J J A S O N D

Butterfly size:

 small  middle  big

Sex:

♀ females ♂ males

Other symbols::

→ ○ Specific features to identify species

Species distribution:

 local  scattered  widespread

* Risk of confusion

Illmitz, January 2022

